



RHODE ISLAND PUBLIC TRANSIT AUTHORITY



Exterior shot of the hotel courtesy of Omni Providence Hotel.

Omni Providence First Hotel Group to Join RIPTA's Wave to Work Program

RIPTA is excited to welcome the **Omni Providence Hotel** as the **first hotel group in Rhode Island** to join our Wave to Work commuter benefits program! With approximately 260 employees, Omni is making it easier for their team to get to work by **partially subsidizing monthly RIPTA bus passes**. This partnership reflects a shared commitment to reducing transportation barriers, supporting workforce development, and promoting sustainable commuting options.

Interested in bringing transit benefits to your organization? Learn more at [RIPTA.com/WaveToWork](https://ripta.com/WaveToWork) or contact commuter@ripta.com.



CEO Christopher Durand stands at a podium to receive the award.

RIPTA Receives Sustainable Transportation Award at Rhode Island Clean Energy Week

RIPTA was honored with the Sustainable Transportation Award during the inaugural Rhode Island Clean Energy Week 2025, presented by the [Northeast Renewable Energy Coalition \(NREC\)](https://www.nrec.org/).

The award recognizes RIPTA's outstanding leadership and commitment to advancing sustainable transportation solutions throughout Rhode Island. RIPTA was selected for this honor in recognition of its innovative efforts to reduce emissions, improve air quality, and provide environmentally-responsible public transit options for Rhode Island residents.

Brian Schuster, Head of External Affairs at Rhode Island Energy, presented the award to **RIPTA Chief Executive Officer Christopher Durand** during an event, which brought together

New England's clean energy leaders, innovators, and policymakers to celebrate organizations transforming the region's energy landscape.

"RIPTA's dedication to sustainable transportation represents exactly the kind of forward-thinking approach needed to build Rhode Island's clean energy future," said **Kristin Rode, Executive Director of Northeast Renewable Energy Coalition**, organizer of Rhode Island Clean Energy Week. "Their commitment to reducing transportation emissions while serving the Rhode Island communities makes them a deserving recipient of this recognition."

RIPTA continues to explore and implement clean energy solutions in public transportation, reinforcing its role as a leader in Rhode Island's transition to sustainable mobility options.



Commuters ride bikes to work for Bike to Work Month.

Keep the Wheels Turning: Keep Biking to Work!

A huge thank you to all the amazing commuters who traded in their car keys for bike helmets during Bike to Work Month! It was fantastic seeing so many of you at our weekly pop-up events. Together, we biked an impressive **12,981 miles** and reduced **5.43 tons** of carbon emissions.

But why stop now? The benefits of biking to work go beyond the challenge – it's a great way to stay fit, save money, and continue to reduce your carbon footprint. Keep the momentum going, and let's make every month Bike to Work Month! Your efforts make a difference, one pedal at a time.



A trolley that reads "Ride free! Bellevue Trolley #67."

FREE Hop-On Hop-Off Service Returns to Newport

This summer, passengers can ride Route 67 and Route 68 FOR FREE! Funded by [Discover Newport](#) and the [Episcopal Diocese of Rhode Island](#), passengers can hop-on and hop-off these two routes through October 31, 2025, at no charge. The service offers transportation around Newport to tourist destinations and beaches. Visit [RIPTA.com/Newport](https://ripta.com/Newport) for details.



Summer service changes effective Saturday, June 21. Pick up a new schedule!

Summer Service Changes

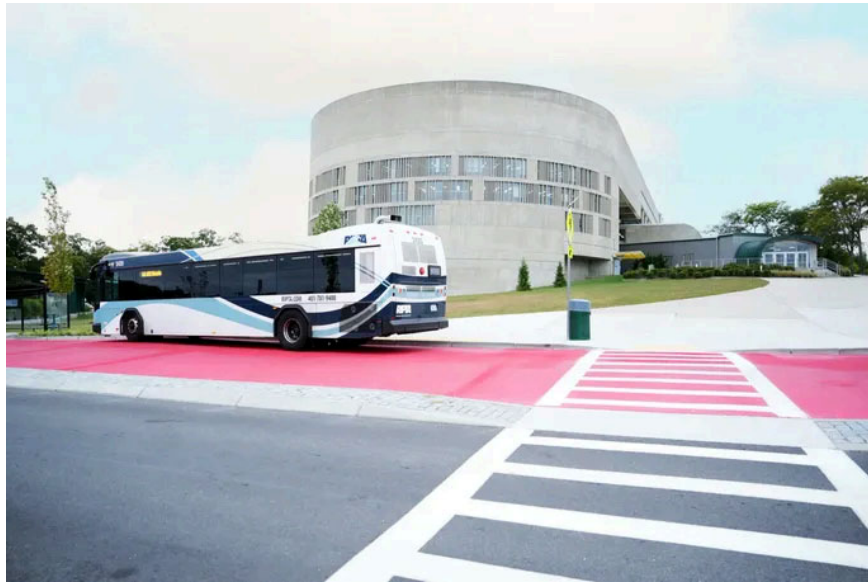
RIPTA will implement summer service changes effective Saturday, June 21, 2025. RIPTA makes regular service adjustments three times a year in response to seasonal changes and/or passenger use. These annual changes are minor and include the start of selected summer services, and changes to trip times. [Click here](#) for details.



Woman wearing a scuba mask and snorkel stands in front of a bus with her beach towel.

Weekend Express Beach Bus Is Back

Express South County Beach Buses serving Scarborough, Roger Wheeler and Galilee State Beaches will operate from the communities of Woonsocket, Central Falls, Pawtucket, Providence (Kennedy Plaza), North Providence and Cranston. Service will operate on weekends and holidays beginning Saturday, June 28 through Sunday, August 24, 2025. [Click here](#) for details.



A RIPTA bus waits in front of CCRI Warwick.

Attention Recent High School Graduates – Free College & Affordable Transit

Did you know that recent Rhode Island high school graduates can attend the Community College of Rhode Island (CCRI) tuition-free for their first two years? Thanks to the Rhode Island Promise Scholarship, all eligible graduates, regardless of family income, can take advantage of this opportunity to earn a degree or certificate at no cost. Best part? You can ride RIPTA to any of CCRI's four campuses!

Getting to class is easy with RIPTA:

- **Knight Campus (Warwick):** Routes 13, 14, 16, 21, 22, 23, 29, 30, 66, and Flex 242
- **Liston Campus (Providence):** Route 6
- **Flanagan Campus (Lincoln):** Routes 51, 54, and 73
- **Newport Campus:** Routes 64x and 68

In addition, CCRI students receive a 50% discount on RIPTA fare products when purchased at campus bookstores with a valid student ID, making public transit an affordable option for daily commuting.

To improve the passenger experience, RIPTA recently partnered with CCRI to upgrade the transit facilities at the Knight Campus in Warwick. This \$1.8 million project created a safer, more comfortable space for riders with:

- Covered bus shelters
- Real-time information screens
- ADA-accessible seating
- Solar-powered lighting

Together, RIPTA and CCRI are making it easier than ever for students to succeed—both in the classroom and on the way there. Learn more about the Rhode Island Promise Scholarship at www.ccri.edu/ripromise

You're invited to the Draft LRTP public meetings!



The first draft of Rhode Island's Long Range Transportation Plan, **Moving Forward RI 2050** is ready for review. Help shape our state's 25-year transportation plan.

June 2nd 5PM - 7PM
The Providence Foundation
30 Exchange Terrace, Ste 4C
Providence

June 10th 12PM - 1PM
Virtual - Zoom
Register at link in bio

June 4th 5PM – 7PM
North Kingstown Free Library
Meeting Room
100 Boone Street, North Kingstown

June 10th 5:30PM - 6:30PM
Virtual - Zoom
Register at link in bio



Any individual requiring accommodation to participate in this meeting should contact Thomas Mannock, Ph. D at 401-222- 6377 (voice), #711(R.I. Relay), or thomas.mannock@hr.ri.gov as soon as possible. Any individual requiring the services of an interpreter should contact Benny Bergantino at benny.bergantino@doa.ri.gov as soon as possible.

Moving Forward 2050 graphic with dates and times of meetings.

Moving Forward RI 2050 Public Meetings

Join the Rhode Island Division of Statewide Planning for their series of public meetings on Rhode Island's draft Long-Range Transportation Plan, Moving Forward RI 2050.

- June 2 from 5PM – 7PM at the Providence Foundation
- June 4 from 5PM – 7PM at the North Kingstown Free Library Meeting Room
- June 10 from 12PM to 1PM on Zoom, register here:
<https://us06web.zoom.us/meeting/register/HZtMmBYVQdC73kNgl3jwew>
- June 10 from 5:30PM to 7:30PM on Zoom, register here:
<https://us06web.zoom.us/meeting/register/ludf6278QfqG5RQd-x9rtA>

The Long-Range Transportation Plan (LRTP) is a federally-required plan that sets the vision for improvements to Rhode Island's multi-modal transportation system - our roads, bridges, public transit, bike paths, sidewalks, ports, and more - over the next 25 years.



"Now Hiring" graphic.

We're Hiring: Human Resources Assistant

This key role supports a wide range of HR functions with a strong focus on recruitment and onboarding. We're looking for candidates with excellent organizational skills, attention to detail, and a customer-service mindset. Be part of a team that helps power Rhode Island's transit workforce! Applications must be received by June 6, 2025. To apply and view the full list of open positions, including drivers, visit [RIPTA.com/careers](https://ripta.com/careers). RIPTA is proud to be an Equal Opportunity Employer.



An image of RIPTA Employee, Greg Harris.

Employee Spotlight: Greg Harris, Planning and Scheduling

Since joining RIPTA in 2003, Greg has played a central role in shaping Rhode Island's public transportation network. He brings a thoughtful, data-informed approach to network design and service planning that directly impacts the way thousands of Rhode Islanders get to work, school, medical appointments, and beyond.

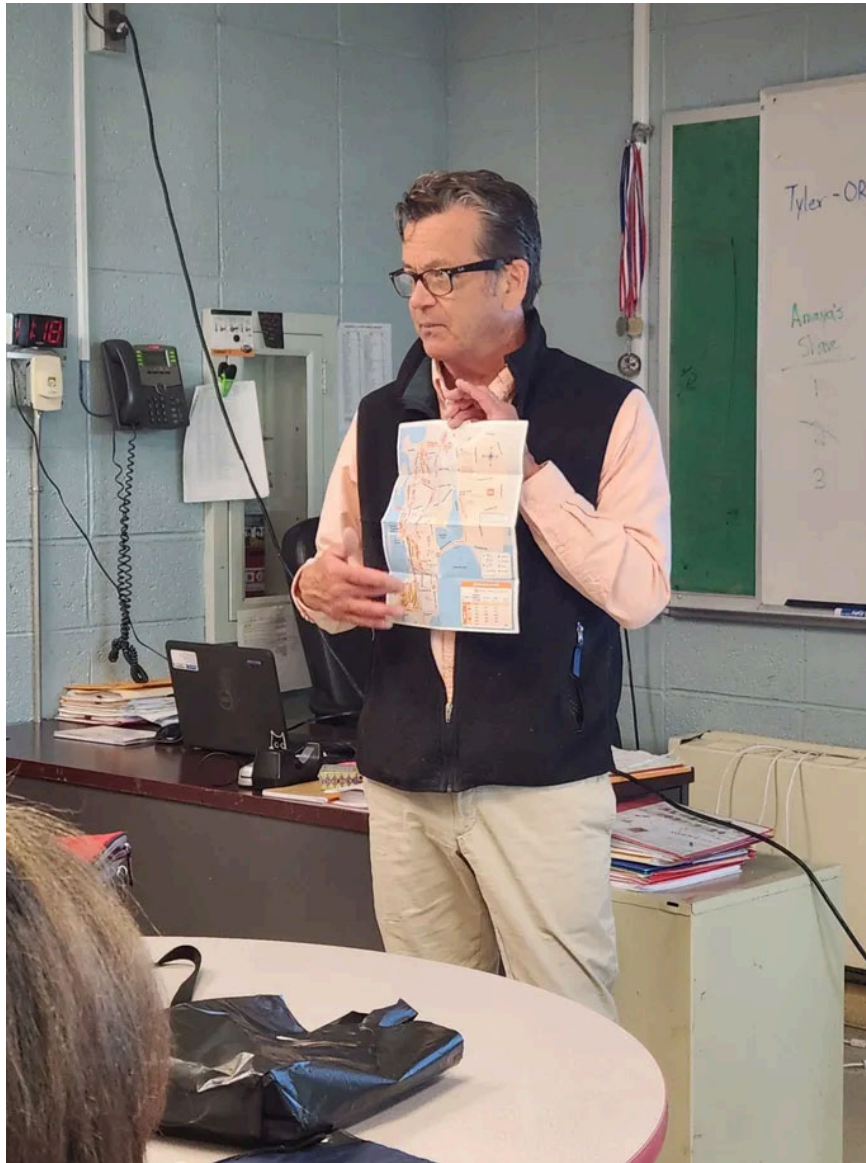
A native of Falls Church, Virginia, Greg grew up in Hingham, Massachusetts. His academic journey reflects a deep connection to the environment and community planning: a semester with the National Outdoor Leadership School (NOLS) in the Rocky Mountains, a BS from SUNY College of Environmental Science & Forestry, and a Master of Community Planning from URI. After a job as a town planner in East Greenwich, Greg found his professional home at RIPTA.

As a Principal Planner, Greg leads the design of RIPTA's fixed-route network, always looking for ways to improve service and connectivity. Recent projects include the CCRI Warwick service redesign (introducing Routes 16 and 23 and modifying the 29) and extending Route 54 to reach Stop & Shop in Bellingham. He also coordinates with municipal and state partners on transit initiatives, contributes to long-term detour planning, ensures Title VI compliance, and supports outreach efforts.

But there's more to the work than simply drawing routes. "When planning for service changes, we have to consider budget, bus and driver availability, layover time, passenger travel patterns, major employers' schedules, and even whether a driver has access to a restroom," Greg explains. "It's a delicate balance of logistics and community impact."

Outside the office, Greg is an avid reader and a lifelong learner. Time with his grandchildren is a top priority, along with a long list of hobbies that include skiing, running, hiking, traveling, gardening, and playing guitar.

What keeps Greg motivated after two decades at RIPTA? "When we get it right, we enable people to access jobs, education, and all that Rhode Island has to offer. That's meaningful work. I also love the ever-changing nature of public transit. There's always something new and working with our team and stakeholders to respond to that change is incredibly rewarding."



A RIPTA employee explains how to read a Flex schedule.

Photo ID Road Trips for RIPTA's Reduced Fare Bus Pass Program

RIPTA's Photo Identification staff will travel to communities throughout the state to process Reduced Fare applications for qualified seniors and individuals with disabilities who are unable to get to our office in Kennedy Plaza. Staff also provide travel training.

Reduced Fare Photo ID Wave cards cost \$10 and are valid for two years. Replacement cards are \$20.00. [Click here](#) to view the schedule for upcoming RIPTA Photo ID Road Trips.

RIPTA staff will process Photo ID Wave cards at the following locations:

- **COVENTRY** Thursday, June 5 • 10am-12pm | Coventry Senior Center | 50 Wood St.
- **WOONSOCKET** Thursday, June 12 • 9am-11:30am | Woonsocket Senior Center | 84 Social St.
- **EAST GREENWICH** Thursday, June 26 • 10am-12pm | East Greenwich Senior Center | 121 Pierce St.

For information on how to qualify for RIPTA's Reduced Fare Program for Seniors and People with Disabilities, customers can call (401) 784-9500, ext. 2012 or visit [RIPTA.com/ReducedFare](https://www.ripta.com/ReducedFare).



Rider Alert Graphic.

SERVICE ALERTS

Holiday Service

Juneteenth (Thursday, June 19) - RIPTA will operate all regular fixed-route bus service on a Sunday/Holiday schedule on Thursday, June 19 in observance of the holiday. All RIPTA offices will be closed on Juneteenth, except for the Customer Service Kiosk in the Newport Transportation Center and the Ride Office. [Click here](#) for details.

Detours

La Festa di San Giuseppe - Friday, June 6 – Sunday, June 8

Route 92 will be detoured from 1pm on Friday through Sunday evening.

Al Fresco on the Hill - Weekly on Saturdays starting June 14 – Labor Day

Route 92 will be detoured from 3pm to 12am.

Gaspee Days Parade - Saturday, June 14

RIPTA will detour Route 4 (Warwick Ave.) from the first trip of the day until 2pm.

PrideFest Parade - Saturday, June 21

Routes 17, 18, 19, and 31 will be detoured from 3pm to 6:30pm. Routes 1, 3, 4, 20, 21, 22, 27, 28, 30, 32, 33, 34, 35, 50, 51, 54, 55, 56, 57, 58, 60, 72, 78, 92 and the R-Line will be detoured from 6:30pm to 10:00pm. Washington, Dorrance, Empire, Weybosset and Fulton streets will be closed during this time.

Visit [RIPTA.com/alerts](https://www.ripta.com/alerts) for details on upcoming detours.